

# PowerBase & Ground Hog Grounding Tools

Power through your grounding applications!

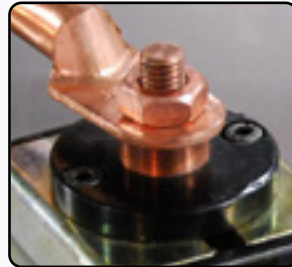
## PowerBase™ Grounding Magnet



Turn OFF the PowerBase™ Grounding Magnet and metal chips fall away.

Power through your grounding applications! Start grounding instantly!

- The PowerBase™ Grounding Magnet sets up quickly and easily.
- Powerful rare earth magnet delivers heavy duty holding power.
- The “V” machined surface grips round parts.
- The copper connector stud allows for better conductivity.



Large copper connector for better conductivity.



Holds securely onto round or flat surfaces.



The ON/OFF Lever is easy to turn, even while wearing gloves.

Part No.	Amperage	Dimension	Magnetic Force	Weight
GM203	300A @ 60% Duty Cycle	2" x 2" x 1.4" 50 mm x 50 x 64	44 LBS 20 kg	0.9 LB 0.4 kg
GM205	500A @ 60% Duty Cycle	2" x 2.75" x 1.4" 50 mm x 70 x 64	110 LBS 50 kg	2.4 LBS 1.1 kg

## Ground Hog™ Clamps



### Ground Hog™

Rated at 530 AMPS @ 60% duty cycle (with 3/0 cable)

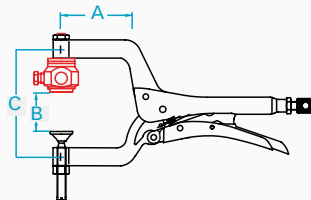
GP950

High clamping pressure improves arc stability and reduces power consumption.

- Prevents current restriction and allows complete current transfer.
- Controls the electrical current by isolating the contact surface and the cable connection.
- Get a smooth, continuous arc with no fade, and no heat transfer while improving cable life, and reducing power consumption.

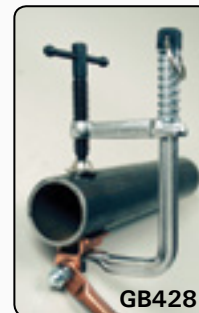
### The Ground Hog

- The groove design on the copperhead seals out weld spatter and reduces particle buildup.
- Side screw provides a secure cable connection.
- Ground Hog body rotates for cable positioning.



## Strong Grip™ Ground Clamp

DUAL FUNCTION Clamping & Grounding

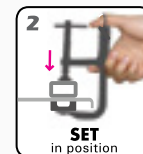


Consistently rated at 300 AMPS  
Solid, insulated copper U-channel rotates for easy access and can attach to round / odd-shaped parts.

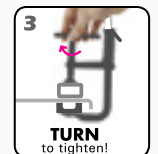
GB428



1  
SQUEEZE  
to open



2  
SET  
in position



3  
TURN  
to tighten!

Part No.	Amperage / Cable Size	Throat Depth (A)	Max. Capacity (B)	Tapped Hole (C)	Clamping Pressure	OAL	Weight
GP950 GP2850	450A / 2/O - 0.427"	3-1/2" 89 mm	2-1/2" 64 mm	3/8-16 M10	400 LBS 180 kg	11" 280 mm	2.4 LBS 1.1 kg
GP951 GP2851	530A / 3/O - 0.475"	3-1/2" 89 mm	2-1/2" 64 mm	3/8-16 M10	400 LBS 180 kg	11" 280 mm	2.4 LBS 1.1 kg
GB428	300A / --	2-1/2" 64 mm	3" 75 mm	1/4-20 M6	220 LBS 100 kg	7" 180 mm	0.8 LB 0.4 kg