

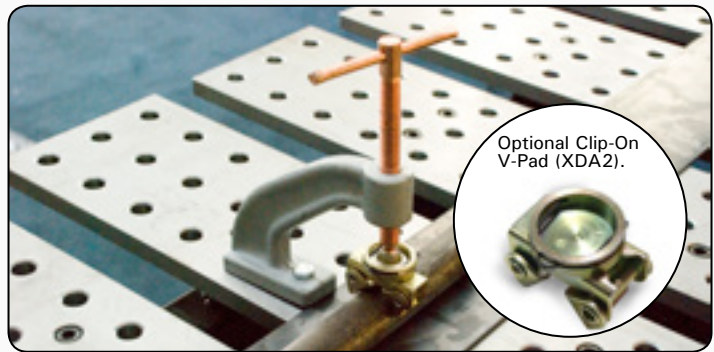
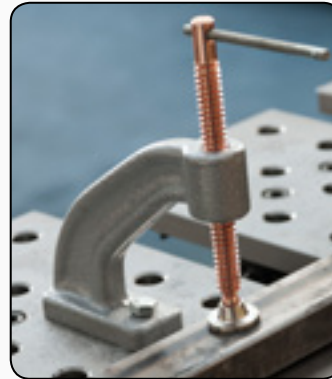
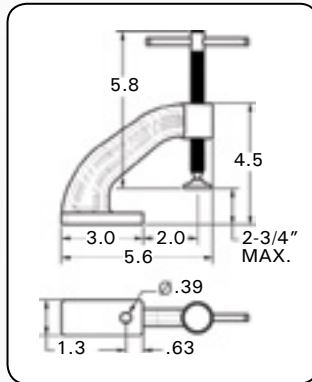
Hold Down, Half & Side Clamps

Hold down action clamps with unique features and accessories.

Hold Down Clamps

Bolt the clamp down to your worktable using the 3/8" hole in the base.

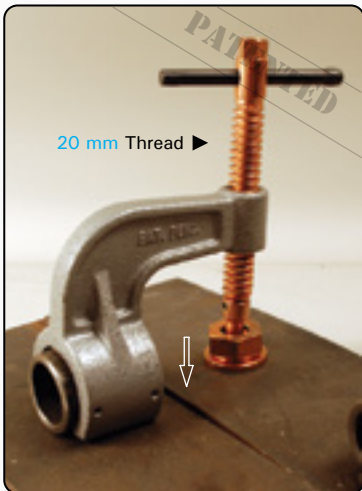
- The 1/2" copper plated Acme spindle resists weld spatter, and the swivel tip makes quick contact with your workpiece.
- Hold pipes by adding our Clip-On V-Pad, Part #XDA2. (See accessories page 33).



Part No.	Capacity	Weight
VHD30	2-3/4" 70 mm	2.0 LBS 0.9 kg

Copper Plated Acme Screw / Ductile Iron Body

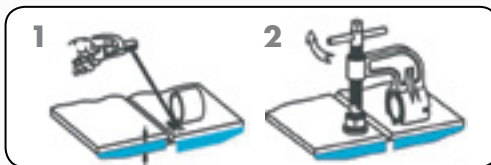
Half Clamps Patent No. US 6,983,525 B2



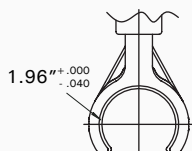
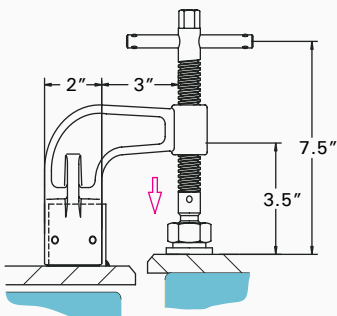
The Efficient, Safe Way to Align Materials.

- The DOG & WEDGE and CUT-OFF C-CLAMP methods of material alignment are messy, time consuming, and unsafe!
- Align materials in the fabrication of water tanks, bulkheads, deck sections, flat plates, etc.
- For big jobs, tack weld additional 1-1/2" cut pipes along the joint.

How to Use



Tack weld the front side of 1-1/2" pipe coupon to the lower of the two surfaces. Slide Half Clamp onto the cut pipe, turn the handle until the misaligned materials align.



Copper Plated Acme Screw / Ductile Iron Body

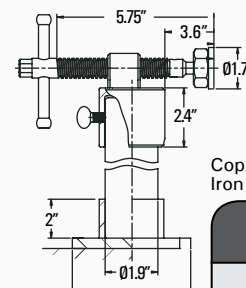
Part No.	Weight
VHC15	3.7 LBS 1.7 kg

Side Clamps

Build push-action clamp to custom heights. Insert pipe (1-1/2" dia.) of desired length. Base can be bolt-mounted to the table.



◀ Insert pipe of any length.



Copper Plated Acme Screw / Ductile Iron Body

Part No.	Weight
VSC15	5.6 LBS 2.6 kg